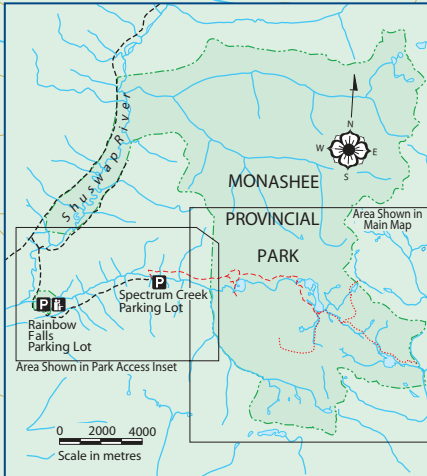
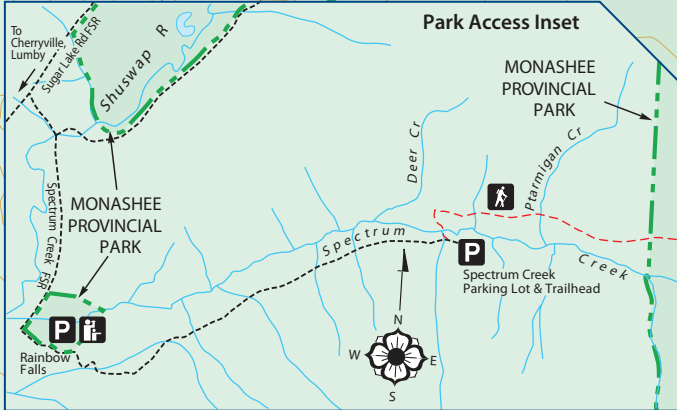
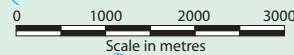
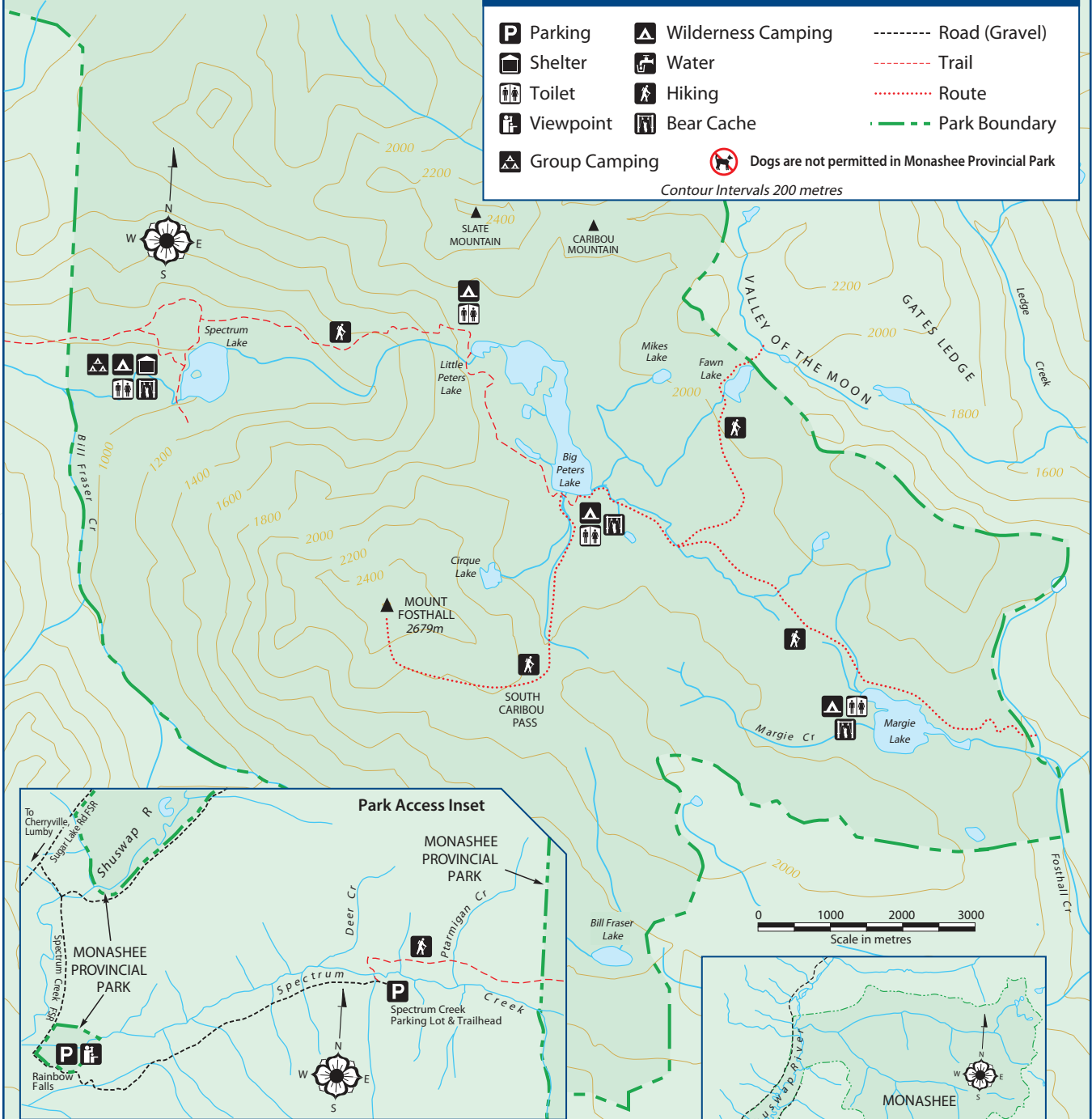


# Monashee Provincial Park

## LEGEND

- Parking
- Shelter
- Toilet
- Viewpoint
- Group Camping
- Wilderness Camping
- Water
- Hiking
- Bear Cache
- Dogs are not permitted in Monashee Provincial Park
- Road (Gravel)
- Trail
- Route
- Park Boundary

Contour Intervals 200 metres



## Trail Information (all times are one way)

Trail to Spectrum Lake area			Alpine Routes (from Big Peters Lake)		
Spectrum Lake Parking Lot	Distance 6 km	2 hours Easy	Margie Lake	Distance 5 km	1.5-2.0 hours Easy
			Fawn Lake	Distance 4 km	1.5-2.0 hours Moderate
			Valley of the Moon	Distance 5.5 km	2.0-2.5 hours Moderate
<b>Trails to Alpine Areas (from Spectrum Lake)</b>			South Caribou Pass	Distance 5.6 km	2.0-3.0 hours Difficult
Little Peter's Lake	Distance 4 km	3-4 hours Difficult	Mount Fosthall	Distance 5.2 km	3.0-4.0 hours Difficult
Big Peter's Lake	Distance 6 km	4-5 hours Difficult			

# Monashee Provincial Park

